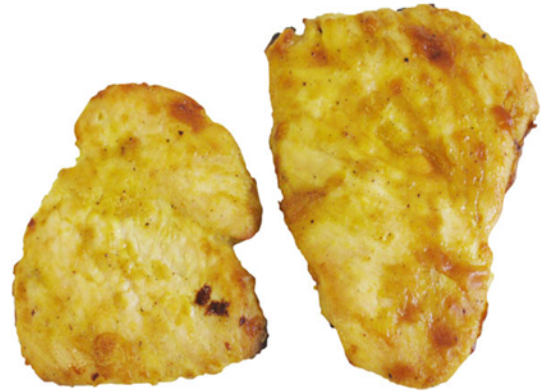


## GLAZED CHICKEN FILLET - FULLY COOKED, TARGET 4.3OZ

### PRODUCT DETAIL

PACK: 20LBS

NET WEIGHT: 20



### EXTENDED DESCRIPTION

MOIST AND TENDER CHICKEN BREAST FILLET. FULLY COOKED SO JUST HEAT AND SERVE. GLAZED AND MARINATED FOR EXTRA FLAVOR. MADE FOR A MAJOR FAST FOOD CHAIN. TARGET SIZE OF EACH FILLET IS 4.3 OZ. EACH SERVING IS TRANS FAT FREE AND A GOOD SOURCE OF PROTEIN. SERVE AS A CENTER OF THE PLATE ENTREE OR IN A HAMBURGER BUN AS A CHICKEN SANDWICH.

### BENEFITS/SUGGESTED USAGE

TRANS FAT FREE. GOOD SOURCE OF PROTEIN.

### INGREDIENTS

CHICKEN BREAST WITH RIB MEAT, WATER, SEASONING (MALTODEXTRIN, SALT, SUGAR, AUTOLYZED YEAST EXTRACT, GARLIC POWDER, SPICES, NATURAL FLAVORS, ONION POWDER, MODIFIED CORN STARCH, CHICKEN FAT, CHICKEN POWDER, CHICKEN BROTH, DISODIUM GUANYLATE, AND DISODIUM INOSINATE, CITRIC ACID, PARTIALLY HYDROGENATED SOYBEAN OIL, DEHYDRATED GARLIC AND ARTIFICIAL FLAVORS), MODIFIED CORN STARCH, SOYBEAN OIL, SALT, SODIUM PHOSPHATES. GLAZED WITH: WATER, SEASONING (MALTODEXTRIN, SALT, SUGAR, METHYLCELLULOSE, AUTOLYZED YEAST EXTRACT, PARTIALLY HYDROGENATED SUNFLOWER OIL, MODIFIED POTATO STARCH, FRUCTOSE, PARTIALLY HYDROGENATED SOYBEAN OIL, GARLIC POWDER, ONION POWDER, DEHYDRATED GARLIC, SPICES, MODIFIED CORN STARCH, XANTHAN GUM, NATURAL FLAVORS, DISODIUM GUANYLATE AND DISODIUM INOSINATE, CHICKEN FAT, CARAMEL COLOR, GRILL FLAVOR (FROM PARTIALLY HYDROGENATED SOYBEAN AND COTTONSEED OIL), CHICKEN POWDER, TURMERIC, SMOKE FLAVOR, ANNATTO EXTRACT AND ARTIFICIAL FLAVORS) AND SOYBEAN OIL.

### INSTRUCTIONS FOR PREPARING AND COOKING

FULLY COOKED. HEAT AND SERVE.

**LOGISTICS INFORMATION**

FREIGHT CLASS: FR60

CUBE: 0.903

DOUBLE STACK: NO

BLOCK & TIER:

SHELF LIFE: 1 YEAR +

GROSS WEIGHT: 22

CASE DIMENSIONS: 15.625X11.75X8.50

CASES PER PALLET: 80

DATING: UNKNOWN

**PRODUCT LABEL**



000 23700 66567 6

9953

8  
6  
1

**SPARE TIME**

**FOR FAJITAS AND WOK COOKING**  
Fully Cooked, Glazed

**Chicken Breast Fillets With Rib Meat**  
Caramel Color and Smoke Flavor Added

INGREDIENTS: Chicken breast with rib meat, water, seasoning (maltodextrin, salt, sugar, autolyzed yeast extract, garlic powder, spices, natural flavors, onion powder, modified corn starch, chicken fat, chicken powder, chicken broth, disodium guanylate and disodium inosinate, citric acid, partially hydrogenated soybean oil, dehydrated garlic, and artificial flavors), modified corn starch, soybean oil, salt, sodium phosphates. GLAZED WITH: Water, seasoning (maltodextrin, salt, methylcellulose, autolyzed yeast extract, modified potato starch, flavors, partially hydrogenated soybean oil, onion powder, xanthan gum, modified corn starch, spices, dehydrated garlic, chicken powder, chicken fat, garlic powder, disodium guanylate and disodium inosinate, caramel color, sucrose, grill flavor (from partially hydrogenated soybean and cottonseed oil), chicken broth, citric acid, turmeric, annatto extract, smoke flavor, soy lecithin, and artificial flavors), soybean oil.

**Nutrition Facts**  
Serving Size 1 Piece (123g)  
Servings Per Container About 73

Amount Per Serving	
<b>Calories</b> 160	Calories from Fat 60
<b>% Daily Value*</b>	
<b>Total Fat</b> 7g	<b>11 %</b>
<b>Saturated Fat</b> 1.5g	<b>8 %</b>
<b>Cholesterol</b> 55mg	<b>18 %</b>
<b>Sodium</b> 770mg	<b>32 %</b>
<b>Total Carbohydrate</b> 4g	<b>1 %</b>
<b>Sugars</b> 1g	
<b>Protein</b> 20g	<b>40 %</b>

Net a significant source of dietary fiber, vitamin A, vitamin C, calcium and iron.  
\*Percent Daily Values are based on a 2,000 calorie diet.

**DEPARTMENT OF AGRICULTURE**

**For Institutional Use Only**

DISTRIBUTED BY:  
TFO SALES AND DISTRIBUTION  
SPRINGDALE, ARKANSAS 72765-0200 U.S.A.

**KEEP FROZEN**

LL#11055780

**NET WT 20 LBS**

**NUTRITION**

Nutrition Facts			
Amounts per Serving			
Serving Size	1 fillet (123 g)		
<b>Calories</b>	160	<b>Calories from Fat:</b>	60
			% Daily Value*
<b>Total Fat:</b>	7 g		11%
Trans Fat:	0 g		%
Saturated Fat:	1.5 g		8%
Mono-unsaturated Fat:	g		%
Poly-unsaturated Fat:	g		%
<b>Cholesterol:</b>	55mg		18%
<b>Sodium:</b>	770 mg		32%
<b>Total Carbohydrate:</b>	4 g		1%
Dietary Fiber:	0 g		0%
Sugars:	1 g		%
<b>Protein:</b>	20g		%
<b>Vitamin A:</b>	µg		0%
<b>Vitamin C:</b>	mg		0%
<b>Calcium:</b>	mg		0%
<b>Iron:</b>	mg		0%

Percent Daily Values are based on a 2,000 calorie diet. Your daily values may be higher or lower depending on your calorie needs. This is a representation of the nutrition label.

The actual nutrition label on the product may vary slightly.

**KOSHER:** No

**CN Label:** No